

Inspire Partnership Academy Trust
Fire Safety Management Policy
Version 2025

Approval Date:	November 2025
Approved by:	Resources Committee
Policy Owner:	Alan Williams
Review date:	November 2026

Contents

1. Statement of Intent	3
2. Roles and Responsibilities	4
2.1 Introduction	4
2.2 Co-Headteachers	4
2.3 Trust Premises Team	5
2.4 Head Fire Warden (which may be the Co-Headteachers)	5
2.5 Site Premises Team	5
2.6 Health and Safety Coordinator (Receptionist/Office Staff/SLT)	6
2.7 Teachers	6
2.8 Fire Wardens	7
2.9 Students	7
2.10 Contractors	7
3. Arrangements	7
3.1 Introduction	7
3.2 Fire Management System	8
3.3 Planning	8
3.3 Emergency Evacuation Plan	8
3.4 Hirers and Extended School Providers	9
4. Conclusion	10
Appendix 1- Fire Management Organisational Chart	11
Appendix 2 - Evacuation Procedure	12
Appendix 3 - Evacuation Drill Report Template	15
Appendix 4 - Fire Warden List	16
Appendix 5 - Fire Risk Assessment:	17
Further Guidance	18

1. Statement of Intent

- 1.1. The Trust primary focus is for the safety of its students, employees and visitors, to that end the fire safety management of the school is based around “life safety”. To achieve this, the academy will ensure:
- a) Appropriate advice, competence and resources are provided to carry out the preventive and protective measures required by the Regulatory Reform (Fire Safety) Order.
 - b) A suitable and sufficient fire risk assessment is completed annually or when significant changes occur.
 - c) A management framework to support the Co-Headteachers to fulfil the role of the Responsible Person is in place to ensure the above objectives are met.
 - d) Appropriate information, instruction and training is provided to all staff and to people who may be affected by the school activities.
 - e) The school environment is safe and promotes fire prevention at all times.
- 1.2. The Co-Headteachers is ultimately the recognised Responsible Person. The Trust as the employer is held by strict liability under the Regulatory Reform (Fire Safety) Order where the premises are to any extent under their control.
- 1.3. In practice responsibility for fire safety is delegated to the Co-Headteachers who manages the school and its fire safety on a day to day basis. The Co-Headteachers has specific areas of responsibility but has delegated defined duties to support staff. Please see fire management responsibilities and the organisation chart in **Appendix 1** for details.
- 1.4. The policy applies to all relevant school activities and is written in compliance with all current UK health and safety legislation.

Name: Andrew Lawrence Signature: 

(Chair of Trustees)

Name: Megan Minnett/Tatum Sharp Signature: M. Minnett T. Sharp

(Co-Headteachers)

Date: December 2025

Review Procedures

This policy will be reviewed regularly and revised as necessary. Any amendments required to be made to the policy as a result of a review will be presented to the Board of Trustees or their delegated Committee of Trustees for acceptance.

Distribution of copies

Copies of the approved policy will be shared to relevant staff and Board members and displayed on the school website.

2. Roles and Responsibilities

2.1 Introduction

- 2.1.1. The Co-Headteachers are responsible for ensuring that all control measures identified in the fire risk assessment are in place and that further improvement actions are completed so far as is reasonably practicable.
- 2.1.2. The Co-Headteachers will assign an appropriate member of their team the responsibility to complete each improvement action.
- 2.1.3. The Trust and site Premises teams complete fire management tasks. This includes maintenance and testing of fire safety systems. Some of these duties are contracted to suitably qualified engineers.
- 2.1.4. Fire wardens have been designated and are suitably trained in their fire evacuation duties. Fire drills are completed once every term. All staff receive fire safety awareness training annually.
- 2.1.5. The school communications system is able to ensure that all of those involved, or potentially involved, in an incident are informed rapidly and effectively, of relevant information. In addition, the systems make use of alternative formats as necessary, with contingency plans for when systems fail.
- 2.1.6. The following are the defined responsibilities for those working within the school who have been assigned specific duties:
 - a) Co-Headteachers
 - b) Trust Premises Team
 - c) Head Fire Warden
 - d) Site Premises Team
 - e) Health & Safety Coordinator
 - f) Teachers
 - g) Fire Wardens

2.2 Co-Headteachers

- 2.2.1. The Co-Headteachers are empowered to ensure that legislative requirements are met; and that testing, maintenance or repairs are initiated as required. Such powers are supported by the necessary, sufficient and appropriate resources, including funds.
- 2.2.2. The Co-Headteachers is responsible for ensuring:
 - a) The school has a fire safety management policy and that such a policy is reviewed annually
 - b) That a fire risk assessment is completed and reviewed annually by a competent person
 - c) Relevant staff are notified of the significant findings of the fire risk assessment
 - d) Recommended actions derived from the fire risk assessment are completed
 - e) The maintenance/testing of all firefighting systems and equipment are completed and recorded on the relevant system and/or in the fire safety logbook
 - f) That the school emergency plan and evacuation procedures are regularly reviewed
 - g) The school has a major incident evacuation plan which may include agreements with local providers and additional training for staff
 - h) All pupils, employees, visitors and others who use the building are made aware of the fire safety precautions and the fire evacuation procedures
 - i) The provision of fire awareness training to all staff
 - j) The provision of fire warden training for designated staff
 - k) That an emergency fire drill is undertaken every term

- l) The preparation of specific personal emergency evacuation plans (PEEPs) for staff and/or pupils with special needs and/or disability
- m) The provision of suitable fire safety systems e.g. fire alarm, automatic detection and emergency lighting
- n) The provision of suitable fire safety equipment such as fire doors, fire signs and fire-fighting equipment
- o) Any fire prevention officer's recommendations and or enforcement notices are complied with
- p) In instances where contractors create hazardous conditions and refuse to eliminate them or take action to make them safe, the Co-Headteachers will take such actions as are necessary to protect the safety of school staff, students and visitors
- q) All hirers and contracted users of the premises receive written details of the fire procedure as part of the hire arrangements
- r) The Deputy headteacher/SLT will take on the responsibilities of the Co-Headteachers in their absence

2.3 Trust Premises Team

2.3.1. The Trust Premises Team will assist the Co-Headteachers to ensure:

- a) The policy is clearly communicated to all relevant persons
- b) All staff are provided with adequate information, instruction and training on fire safety management
- c) Appropriate consultation arrangements are in place for staff
- d) Emergency procedures are in place
- e) Fire safety systems and equipment is inspected and tested to ensure they remain in a good working condition
- f) Arrangements are in place to inspect fire safety management of the premises
- g) All servicing and maintenance records are held on file, and the fire safety logbook is maintained up to date
- h) The activities of contractors are adequately monitored and controlled
- i) Hot work permits are in place where required
- j) Reports are made available to the Trust Board on the performance of fire safety management within the school
- k) That fire compartmentation is sound and that any fire engineering solutions are suitably maintained

2.4 Head Fire Warden (which may be the Co-Headteachers)

2.4.1. The Head Fire Warden is responsible for:

- a) Collecting all of the area and classroom information from Teachers and Fire Wardens
- b) Controlling the assembly point
- c) Ensuring that fire and rescue service access gates are opened
- d) During a practice, noting escape times and general observations for improvement
- e) Liaising with the fire and rescue service to ensure that all relevant information is communicated effectively
- f) Providing the fire and rescue service with a detailed (ideally laminated) plan of the building
- g) Ensuring that no one re-enters the building until deemed safe to do so by the fire and rescue service
- h) Implementing the major incident site evacuation plan if required

2.5 Site Premises Team

- 2.5.1. The Site Premises Team are responsible for controlling work, maintaining safety systems and maintenance within and to the school premises and that a system has been developed proactively with clear lines of responsibility for logging and audit processes and the routine checking and supervision thereof.
- 2.5.2. The maintenance system is one where there is dynamic monitoring of the fire safety systems, and the equipment is kept fully functional at all times when the building is in use.
- 2.5.3. The Site Premises Team are responsible for:
- Ensuring appropriate information on significant risks is given to visitors and contractors
 - The formal maintenance and regular testing of the fire alarm system
 - The formal maintenance and regular testing of the emergency lighting
 - The maintenance and inspection of the firefighting equipment
 - The maintenance of exit/escape routes and signage
 - The completion and upkeep of the school systems and fire safety logbook
 - Supervision of contractors undertaking work within the premises, including hot work
 - Reporting any hazards (which cannot be dealt with) to the Co-Headteachers
 - Ensuring that access can be gained at all times to the electric and gas shut off devices
 - Ensuring that fire critical plant such as gas boilers are serviced in line with the schools planned preventative maintenance regime
 - Ensuring that electrical equipment is suitably maintained and that fixed electrical wiring is inspected at least every five years in line with the planned preventative maintenance regime
 - Ensuring that firefighter equipment is maintained and accessible, e.g. fire hydrants and dry risers

2.6 Health and Safety Coordinator (Receptionist/Office Staff/SLT)

- 2.6.1. The Health and Safety Coordinator is responsible for:
- Calling the fire and rescue service to ensure that they have been notified of the alarm
 - Ensuring that classroom registers are always available and are taken to the assembly point in the event of an evacuation
 - Ensuring that visitors and contractors are signed in to the building and are notified as to the evacuation procedures
 - Where appropriate escorting visitors and contractors from the building
 - Collecting information such as contact details of parents
 - Taking such information to the assembly point for use in a major incident/site evacuation

2.7 Teachers

- 2.7.1. Teachers are responsible for:
- Acting as fire wardens (see Fire Warden section below) when evacuating their class from the school
 - Ensuring that their particular classrooms are kept free of hazards which may block escape routes
 - Ensuring that all electrical equipment used within the classroom have been suitably maintained
 - Reporting any hazards (which cannot be dealt with) to the Premises Team
 - Ensuring that new pupils are suitably trained in evacuation procedures
 - Ensuring that pupils who attend class with a prohibitive injury are assessed and that a personal emergency evacuation plan (PEEP) is put in place
 - Following school evacuation procedures including reporting to the Head Fire Warden with the results of the register check

- h) Controlling their class at the assembly point, ensuring that no pupil re-enters the building until the Head Fire Warden announces that the school is safe, or leaves the school premises
- i) If required, be aware and trained in the major incident evacuation plan which may require escorting the class away from the premises to a safe site
- j) Taking part in any fire safety training provided by the school

2.8 Fire Wardens

2.8.1. The Fire Wardens / Support Staff (given responsibility) are responsible for:

- a) Ensuring that their designated areas are clear before leaving the building
- b) Closing all fire doors (not on automatic closers) before leaving their area
- c) Taking an active day to day role in fire prevention and hazard spotting
- d) Reporting fire safety issues such as missing fire extinguishers
- e) Ensuring that fire escape routes/stairs and fire exits are not blocked
- f) Reporting any hazards (which cannot be dealt with) to the Premises Team
- g) Reporting to the Head Fire Warden at the assembly point to notify them of the occupancy status of their area
- h) Assisting the Head Fire Warden in securing the building and ensuring that no one re-enters the premises until it is deemed safe to do so by the fire and rescue service or the Responsible Person

2.9 Students

2.9.1. Students, in accordance with their age and aptitude, are expected to:

- a) Exercise personal responsibility for the safety of themselves and others
- b) Observe all the safety rules of the school and in particular the instructions of staff given in an emergency
- c) Use and not wilfully misuse, neglect or interfere with equipment provided for their safety

2.10 Contractors

2.10.1. Contractors are responsible for:

- a) Identify and control any risks arising from their activities and inform the Co-Headteachers of any risks that may affect the school staff, students and visitors
- b) Be aware of the fire safety management policy and emergency procedures and comply with these at all times
- c) Reading and adhering to all safety documentation and procedures given to them by the Co-Headteachers or Premises Team at all times they are on site
- d) Liaise with the Premises Team and ensure any faults are reported

3. Arrangements

3.1 Introduction

3.1.1. The Fire Safety Order specifically requires a fire risk assessment to be carried out and to be suitably reviewed. This has been completed for the premises and is reviewed annually or when there is a significant change, whichever occurs first. Significant changes include, but are not limited to:

- a) Any structural changes (alternations to the layout of the premises, erection of partitions, refurbishments, etc.) which may affect the spread of fire
- b) Any change to the use of the premises which may affect the risk rating
- c) Any change to work processes or work equipment which may introduce new fire hazards
- d) A change in the number of people using the premises to ensure that escape routes can accommodate the numbers safely

3.1.2. In addition, it is expected that the school will put in place a management system/policy and procedures to deal with fire safety and prevention.

3.1.3. The fire safety management policy sets out the objectives in respect of fire prevention and emphasises the schools' commitment to fire safety.

3.1.4. The school aims to have proactive liaison with the local fire and rescue service including effective arrangements for notifying the fire and rescue service of changes to the occupancy, periods of abnormal occupancy, fire growth characteristics and other relevant factors. The arrangements allow for routine meetings with the fire and rescue service and additional meetings where a change in the building or its occupancy is proposed.

3.2 Fire Management System

3.2.1. There is a clear fire management system in place to ensure that the school suitably manages the fire risk and that the system seeks to anticipate and proactively identify the impact of any proposed changes. The management team of the school identify any alternative protection and management measures that will be required as a result and ensure that they are implemented.

3.2.2. The staffing level provided is specifically appropriate to the fire safety requirements of a primary school. It includes sufficient trained personnel to ensure that all occupants are assisted or supported to make their way out of the building effectively in an emergency.

3.2.3. The training ensures that there are sufficient numbers of staff trained in all aspects of fire prevention, fire protection and evacuation procedures and able to use the appropriate extinguishing equipment (and media), to provide full coverage of the building, with provision for contingencies, sickness or holiday absences.

3.3 Planning

3.3.1. The implementation of corrective actions is ongoing following each risk assessment review with priority given to the highest risks. Where budget restraints delay implementation, risk management strategies will be put in place to reduce the risk.

3.3.2. The planning system is proactive and takes into account a wide range of possible emergencies and incidents. These are likely to include planning for logistical issues such as the provision of shelter, communications, transport, the weather, time of day, time of the week, time of year (holidays, etc.) and traffic-related issues, as well as scenarios such as power failures or floods.

3.3 Emergency Evacuation Plan

3.3.3. The school will ensure a suitable emergency evacuation procedure is prepared and made available to all staff. The procedure shall:

- a) Describe the responsibilities of all staff during an emergency
- b) Describe the fire alarm activation signal

- c) Describe the actions staff need to take to safely evacuate the premises
 - d) Describe the responsibilities for communicating with the emergency services
 - e) Describe the location of the fire assembly points
 - f) Describe variations to the plan, including out of hours arrangements and school events
 - g) Include a copy of the schools' means of escape plan
- 3.3.4. The school will ensure the emergency evacuation plan is reviewed following significant changes to the building's infrastructure or following significant events such as fire.
- 3.3.5. All staff, whether temporary or permanent, will have the evacuation procedure explained to them, together with information on the location of fire alarm call points, the location of the fire alarm and the location of escape routes, exits and assembly points.
- 3.3.6. The Co-Headteachers will ensure the preparation of specific personal emergency evacuation plans (PEEPs) for staff and/or pupils with special needs and/or disability.
- 3.3.7. All persons with the responsibility of ensuring the safe evacuation of staff and/or pupils with special needs and/or disabilities will be made aware of the personal emergency evacuation plans (PEEPs) in place.
- 3.3.8. The Co-Headteachers will ensure parents are consulted during the preparation of the personal emergency evacuation plan (PEEP) for their child.
- 3.3.9. All personal emergency evacuation plans (PEEPs) will be reviewed following significant changes to the infrastructure of the building, following substantial events such as fire or changes to the user's individual needs.
- 3.3.10. The Co-Headteachers will ensure emergency evacuation equipment is available and suitable for the user. Emergency evacuation equipment will be maintained in accordance with the manufacturer recommendations. All staff required to assist the evacuation of staff and/or pupils with special needs and/or disability are suitably trained in the use of equipment.
- 3.3.11. The school will ensure evacuation drills are completed on a termly basis and records maintained on the relevant system and/or within the fire safety logbook.
- 3.3.12. Following the completion of the evacuation drill, the Head Fire Warden will complete an evacuation drill report. The report will:
- a) Log all details of the fire drill, including how the evacuation drill went and any inappropriate actions or problems which were noted as a result
 - b) Detail the Fire wardens present during the drill
- 3.3.13. An evacuation drill report template can be found in **Appendix 3** of this policy.
- 3.3.14. The Head Fire Warden will carry out a debrief to all Fire Wardens on the significant findings, including any improvements which are to be made during an evacuation.
- 3.3.15. A copy of the emergency evacuation plan can be found in **Appendix 2** of this policy.

3.4 Hirers and Extended School Providers

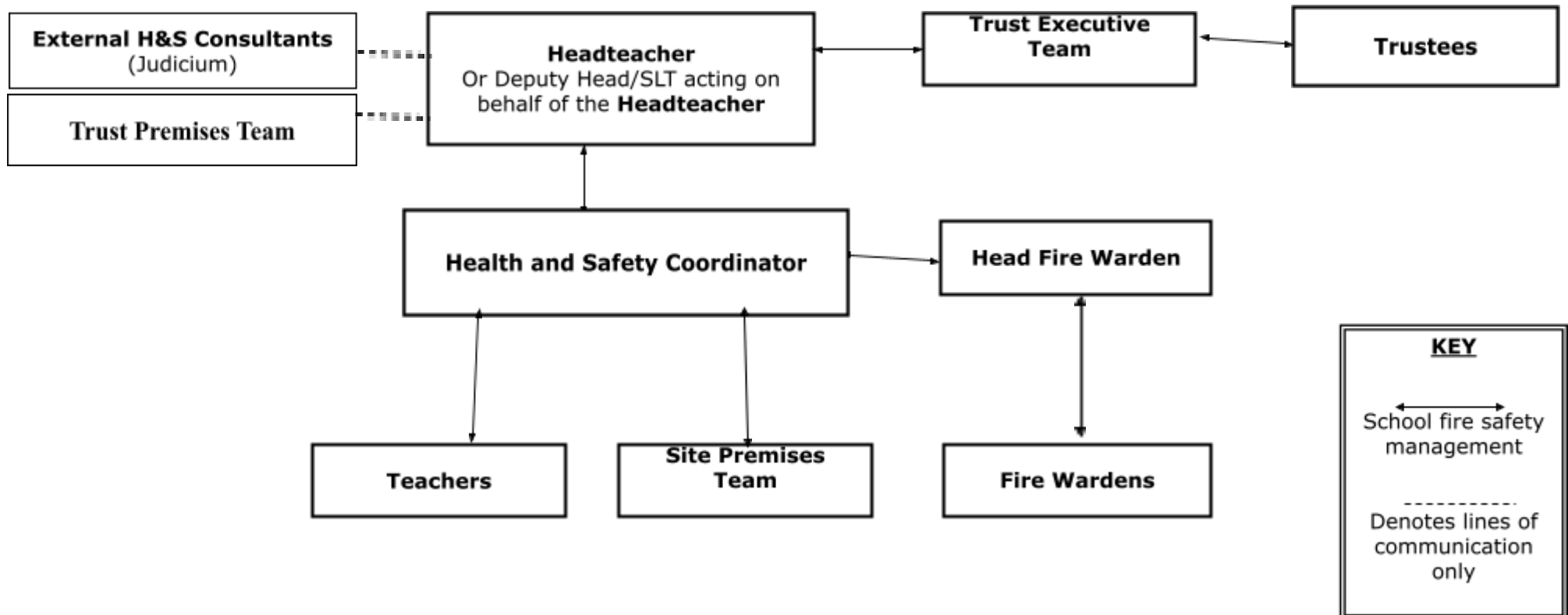
- 3.4.1. All hirers and contracted users of the premises will receive written details of the fire procedure as part of the hire arrangements. Hirers of the building are required to adhere to the fire procedures at all times and take such measures as are necessary to ensure the safety of those children/persons for whom they have responsibility.

4. Conclusion

- 4.1. The fire safety management policy reflects the school's serious intent to accept its responsibilities in all matters relating to fire safety and that clear lines of responsibility and organisation describe the arrangements which are in place to implement all aspects of this policy.

Appendix 1- Fire Management Organisational Chart

Foxfield Primary School



Appendix 2 - Evacuation Procedure

Emergency Evacuation Plan - Inspire Partnership Academy Trust

School address and contact number	Foxfield Primary School Raglan Road SE18 7EX 02032607500
Plan date	January 2026
Review date	January 2027

Fire Alarm Information

The fire alarm panel is an addressable system located to the office. Automatic detection is located to;

- Classrooms
- Escape routes
- School kitchen
- Staffroom
- Main plant room

The alarm sound is a continuous warning siren.

Raising the alarm

On discovering a fire, the alarm will be raised by activating the nearest call point.

Action to take on hearing the alarm

The following actions will be taken upon the fire alarm being sounded/raised:

- The Co-Headteachers will take charge and lead in the fire evacuation. In the event of the Co-Headteachers being absent, the nominated Deputy will take charge
- The Co-Headteachers will dial 999 and request attendance by the Fire Service and give their name, name of the building, building address (as detailed above), contact number and details of fire
- Reception staff will pick up visitors signing in book and Evacuation Report from the reception desk
- Teaching staff will begin evacuation of the students – ensuring this is done in a calm and orderly manner providing assistance to those needing additional help in evacuating
- Separate 'Personal emergency evacuation plans (PEEPs)' are in place for staff and students with additional needs
- Fire wardens to sweep the areas of their responsibility to ensure all areas are clear if safe to do so and ensure all doors are closed on the way out
- If safe to do, electrical mains and gas supplies should be switched off before leaving the building. The location of these are detailed below
- The Co-Headteachers will ensure nobody re-enters the building until confirmed safe to do so by the Fire Service
- Meet at the assembly point (playgrounds) and check all persons are account for. Roll call will be carried out by the Co-Headteachers.
- The Co-Headteachers will liaise with Fire Service

Disabled and temporarily injured persons

Any students or members of staff with a disability will have a Personal Emergency Evacuation Plan (PEEP) which sets out how they will be evacuated in an emergency situation. If our visitors have a disability, we will discuss evacuation with them on arrival.

School pets and PAT-Dog

N/A

Escape routes

Escape routes from the building include direct escape from classrooms or via escape corridors which are signed and have doors which will automatically release upon full alarm to facilitate emergency egress.

Fire assembly point

The assembly point is: Playgrounds

Fighting fires – Extinguisher use

Fire extinguishers will only be used where:
 Staff have received training and feel confident in their use
 Where it is deemed safe to do so, e.g. there is a clear means of escape, fire is small

Personal safety always takes priority and, if, in any doubt, staff should not attempt to extinguish a fire

Location of key safety hazards or other fire-related equipment

- Gas supply shut off: Gas intake Main Shut off Valve-Front of School Green Box
- Mains fuse box: Electrical intake in KS1 playground
- Location of fire alarm panel: Main Reception and Year 3 Children's Toilets

Variations to plan

Out of hours arrangement

Upon hearing the fire alarm, evacuate via the nearest exit and make your way to the assembly point. Dial 999 for the fire brigade. Do not make your way back into the building or collect personal belongings.

School events

Should an evacuation be needed during other times (after school clubs, evening events, weekend events etc.) The adults in charge of the activity are responsible for evacuating participants safely, and the fire service is called. The fire brigade **MUST** be made aware of any missing persons.

Hires of the building

If the premises are being used by an external body out of hours, it will be the responsibility of the person in charge to maintain all roles in ensuring participants are evacuated safely, and the fire service is called.

Evacuation procedures are made clear to the external body at the time of booking. A copy of the evacuation plan is also provided.

Back up arrangements

In the event the fire alarm system is no-operational in any way, all staff will be made aware and back up arrangements implemented. The person locating the fire will get a message to the reception so that the handbell can be rung continuously throughout the premises (if safe to do so). All staff will ensure they inform staff/students as they evacuate the buildings.

Alternative arrangements will be made to cover staff absences/ leave etc. to ensure there are always a sufficient number of trained staff available on site

Responsibilities

Review emergency procedures:	Co-Headteachers/Trust Estates Lead
For ensuring adequate staff are on duty to carry out the evacuation plan	Co-Headteachers/Trust Premises Team
For training staff on the evacuation plan and in their roles and responsibilities	Co-Headteachers/Site Premises Team

Appendix 3 - Evacuation Drill Report Template

Date of Report:		Completed by:	
Date of Drill:		Time of drill:	
Time taken to evacuate:			
Time taken to complete roll call:			
	Y/N N/A	Observations:	
Fire wardens reported to the assembly point and performed tasks?			
Staff & students responded to fire alarm and reported to assembly point?			
All windows and doors closed during evacuation?			
Occupants exited via nearest exit?			
Visitors / contractors / students were properly directed?			
Persons with disabilities were accounted for?			
Personal emergency evacuation plans (PEEPs) followed?			
Roll call carried out and missing persons accounted?			
Exits guarded to prevent re-entry?			
Occupants did not attempt to reenter the building?			
Emergency grab bags collected (if safe to do so)?			
Student/staff and visitor registers collected?			
School pets, guide/therapy dogs evacuated?			
Communicated equipment used effectively, e.g. radios?			
Effectiveness of drill Satisfactory / Unsatisfactory			
Additional observations (Include notes that will help response, performance and management of future evacuation drills):			

Appendix 4 - Fire Warden List

Head Fire Warden:	
Location:	
Location:	
Location:	
Location:	
Location:	
Location:	
Location:	
Location:	
Location:	
Location:	

Appendix 5 - Fire Risk Assessment:

See separate document

Further Guidance

Further guidance can be obtained from organisations such as the Health and Safety Executive (HSE) or Judicium Education. The following are some examples. The H&S lead in the school/academy will keep under review to ensure links are current.

- HSE
<https://www.hse.gov.uk/>
- Education and Skills Funding Agency – Fire Safety in new and existing school buildings
<https://www.gov.uk/government/publications/fire-safety-in-new-and-existing-school-buildings/fire-safety-in-new-and-existing-school-buildings>
- National Education Union (NEU) – Fire Safety
<https://neu.org.uk/advice/health-and-safety/health-and-safety-schools-and-colleges>
- National Fire Chiefs Council (NFCC)
<https://www.nationalfirechiefs.org.uk/>
- Local Fire and Rescue Service
<https://www.nationalfirechiefs.org.uk/Fire-and-Rescue-Services>

Further Resources

- HM Government Fire Safety Risk Assessment – Educational Premises
https://assets.publishing.service.gov.uk/government/uploads/system/uploads/attachment_data/file/14887/fsra-educational-premises.pdf